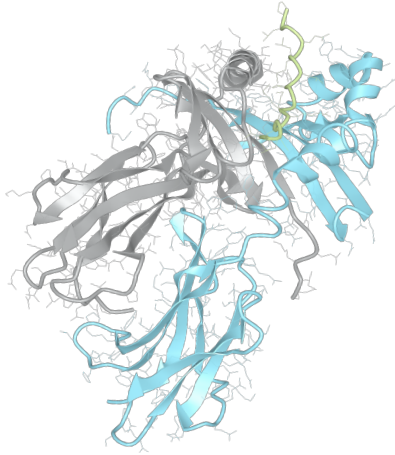


# Product datasheet



## sHLA- DRB1\*09:02 DRA\*01:01

DRB1\*0902, DRB10902, DRB1\*09, DRB09, DR9  
DRA\*0101, DRA0101, DRA\*01, DRA01

<b>Serological Name</b>	DR9
<b>Peptide Load</b>	Endogenous
<b>Modification</b>	Unmodified
<b>Conjugation</b>	Unconjugated
<b>SKU</b>	DRB10902

### Product Description

<b>Allele Name</b>	DRB1*09:02 DRA*01:01
<b>HLA Class</b>	HLA Class II
<b>HLA Gene Locus</b>	HLA-DR
<b>Alternative Allele Name A Chain</b>	DRA*0101, DRA0101, DRA*01, DRA01
<b>Alternative Allele Name B Chain</b>	DRB1*0902, DRB10902, DRB1*09, DRB09, DR9
<b>Description</b>	Recombinant, truncated Class II soluble Human Leukocyte Antigen (sHLA), naturally folded and glycosylated, loaded with endogenous peptides.
<b>Serological Name</b>	DR9
<b>Serological Split</b>	-
<b>Allele Frequency [World Population]</b>	
<b>A chain</b>	-
<b>B chain</b>	0.2%

### Associated products

[DRB10902bio](#)  
[DRB10902pe](#)

## Product Specification

<b>Product name</b>	HLA-DRB1*09:02
<b>HLA Species</b>	Human
<b>Host Cell Line Species</b>	Mouse
<b>Clone Designation</b>	D12C9
<b>Tail Specification</b>	ZP
<b>Peptide Load</b>	Endogenous
<b>Modification</b>	Unmodified
<b>Conjugation</b>	Unconjugated
<b>Complexity</b>	Monomer
<b>Protein Format</b>	Recombinant, truncated, zipper-stabilized, soluble, non-modified, non-labeled, endogenously loaded
<b>Storage Temperature</b>	4°C (This product should be stored undiluted)
<b>Form</b>	Liquid
<b>Concentration</b>	1000.0 µg/ml
<b>Formulation</b>	PBS/0.02% Sodium Azide
<b>pH</b>	7.4
<b>Purification Method</b>	Affinity Chromatography
<b>Grade</b>	Research Use Only [RUO]
<b>Authentication Verification</b>	Sequence Based Typing

## Protein Sequences

<b>Alpha Chain Sequence</b>	<p>                     IKEEHVIIQA EFYLNPDQSG EFMDFDGDGE IFHVDMASSE TVWRLEEFGR FASFEAQGAL                      ANIAVDKANL EIMTKRSNYT PITNVPPEVT VLTNSPVELR EPNVLICFID KFTPPVVNVV                      WLRNGKPVTT GVSETVFLPR EDHLFRKFHY LPFLPSTEDV YDCRVEHWGL DEPLLKHWEF                      DAPSPLPETT EVDGGGGGAQ LEKELQALEK ENAQLEWELQ ALEKELAQ                 </p>
<b>Beta Chain Sequence</b>	<p>                     GDTQPRFLKQ DKFECHFNG TERVRYLHRG IYNQEENVRF DSDVGEYRAV TELGRPDAEY                      WNSQKDFLER RRAEVDTVCR HNYGVGESFT VQRRVHPEVT VYPAKTQPLQ HHNLLVCSVS                      GFYPGSIEVR WFRNGQEKA GVVSTGLIQN GDWTFQTLVM LETVPRSGEV YTCQVEHPSV                      MSPLTVEWRA RSESAQSKVD GGGGAQLKK KLQALKKKNA QLKWKLQALK KKLAQ                 </p>

## Related Products

[DRB10901](#)  
[DRB11101](#)  
[DRB10701](#)  
[DRB11501](#)

## Applications

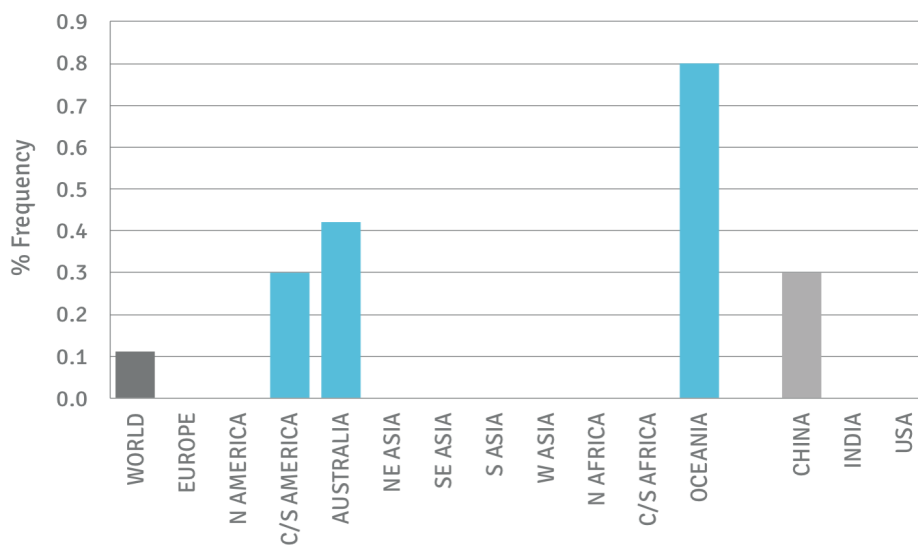
HLA Sandwich ELISAs  
HLA Direct ELISAs  
HLA-Sera Antibody Assays  
HLA Controls in ELISA Assays  
HLA Assay Standards  
HLA Blocking Assays  
HLA Neutralizing Assays  
HLA Competition Assays  
HLA Bead Assays  
HLA Immunization Procedures

## Recommended Antibodies

L243

## Allele Frequency

### Worldwide Allele Frequency



DRB1\*09:02

Please note:

ALL PRODUCTS ARE FOR RESEARCH USE ONLY. NOT FOR COMMERCIAL USE IN DIAGNOSTIC PROCEDURES.  
For more information, please visit our Policies section on our website. For licensing inquiries, please contact

[licensing@hlaprotein.com](mailto:licensing@hlaprotein.com)

 HLA Protein  
PURE PROTEIN LLC

**Eplet Assignments**

**DRB1\*09:02**

Eplet	Polymorphic Residues	Antibody Reactivity
13FE	13F14E	Yes
16H	16H	
25R	25R	Yes
26Y	14E25R26Y	
28H	28H	
30G	28H30G31I	
31I	31I32Y33N	
32Y	32Y	
32YN	32Y33N	
33N	33N	
37N	37N38V	
38V	38V	
40F	40F41D	
47Y	47Y	
47YR	47Y48R	
57D	57D60Y	
57DA	57D58A60Y	
58A	58A	
58AY	58A60Y	
60Y	60Y	
67F	67F	
70R	70R71R	Yes
70RE	70R71R74E	
71R	71R	
73A	73A77T	Yes
74E	73A74E77T	
77T	77T	Yes
85V	85V	
86G	85V86G	
96H	96H	
98E	98E	Yes
104A	104A	Yes
104AK	104A105K	
108P	105K108P	
112H	112H	
120S	120S	
140A	140A	
140AV	140A142V	
149Q	149Q	
180V	180V	
180VMP	180V181M183P	
181M	181M	Yes
189R	187E189R	